



TRIMAY®  
*"no wear comes close"*

**INFRASTRUCTURE**

**"No Wear Comes Close"®**



# ABOUT TRIMAY<sup>®</sup>

Trimay<sup>™</sup> is a manufacturer of advanced wear materials that are designed to significantly increase wear life on equipment components for the Asphalt, Concrete, Aggregate and Construction industries. These patented alloys are engineered to provide exponential increases in wear life and significant reductions in repair and maintenance costs resulting in increased maintenance ROI.

Trimay Advanced Wear Materials are supplied as Wear Plate, Wear Pipe, Elbows, Transitions and Bends.



## INFRASTRUCTURE APPLICATIONS

- Slat Decks
- Pugmill Liners
- Paver Screed Plates
- Paver Floor Plates
- Re-mix Paver Auger Systems
- Shuttle Buggy conveyor floors
- Shuttle Buggy front housing liners

- Pick-up Machine Floor Plates and Chain Guides
- Cold Mix Reclamation Machine Liners and Skid Shoes
- Loader Bucket Liners
- Grader Moldboard Liners
- Crusher Feed Chutes and Transitions
- Mixer Drum Liners and Fins
- Dozer Blade Liners



# WHY TRIMAY®

## QUALITY

Tightly controlled manufacturing process

Commitment to continuous improvement through Research and Development.

- Recently Trimay has developed two new alloy blends. One achieves abrasion resistance approaching Tungsten Carbide at one quarter the cost. The other achieves the same wear with the impact resistance of Manganese.

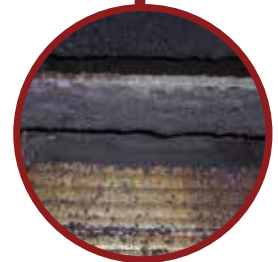
## TRACEABILITY

All products manufactured by Trimay can be traced back to source. Information on each component, alloy applied and testing performed is readily available to the client.

## RELIABILITY

Trimay Products are submitted to rigorous, random testing to ensure consistency and high standards.

Decades of repeat business and successful field applications show the confidence our clients have in Trimay Wear Materials.



## TRIMAY WEAR PLATE AND WEAR PIPE ALLOYS

All Trimay alloys are proprietary and blended in-house. They are available as clad plate in 3mm to 17mm overlay thickness and 9mm to 50mm total thickness. They are also available in clad pipe from 3"-48" diameter and as consumables in wire and electrode.

### T168i

T168i is a revolutionary new material specifically designed as a chromium free and heat-treatable material. It provides the best performance in aggressive environments where severe impact and abrasive wear are critical sources of material failure.

### T171

T171 is a patented Boron Carbide iron based steel overlay wear solution with a near nanoscale (submicron) microstructure. T171 is well suited for the toughest jobs in the most extreme service environments. T171 is developed by Trimay® Wear Plate Ltd.

### T170

T170 is a Tungsten Carbide alloy in a nickel based steel overlay wear solution with a unique proprietary composition designed to withstand heavy impact and severe wear environments.

### T138, T156 AND T157

T138, T156 and T157 are Chromium Carbide alloys in an iron-based steel overlay deposit. Each of the Alloy blends provide unique combinations of wear resistance, impact resistance and co-efficient of friction. T157 is our best-selling product with decades of blind wear tests showing that it is the best CrC Wear Plate available on the market.



780.451.2206

1.800.782.5445

[www.trimay.ca](http://www.trimay.ca)

[trimay@trimay.ca](mailto:trimay@trimay.ca)